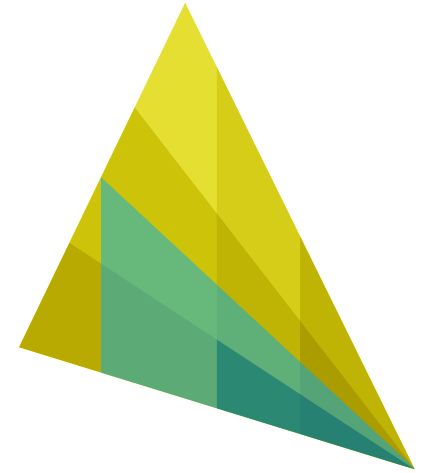




WEST**HOLME**



EAST**HOLME**

Developed by



LANDHAVEN



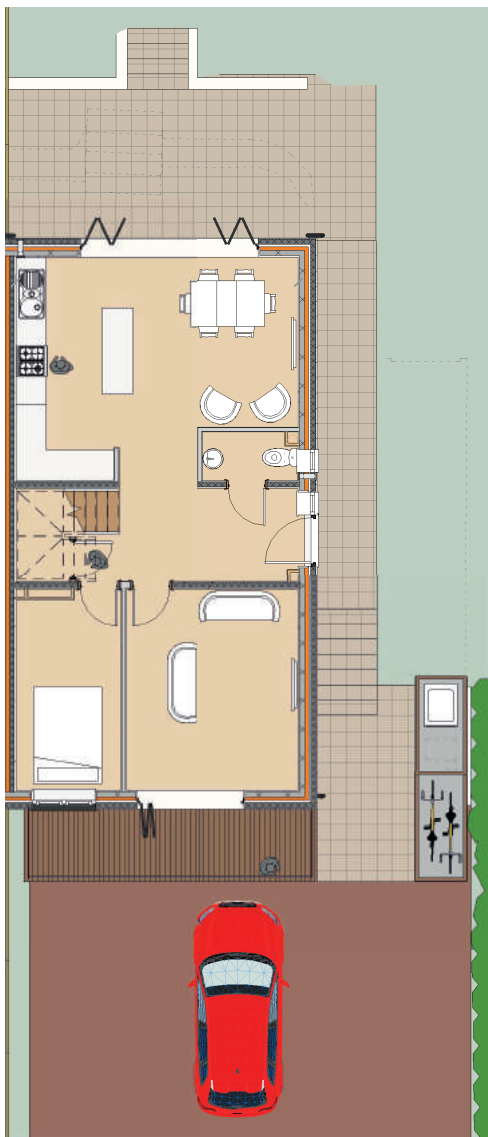
WESTHOLME



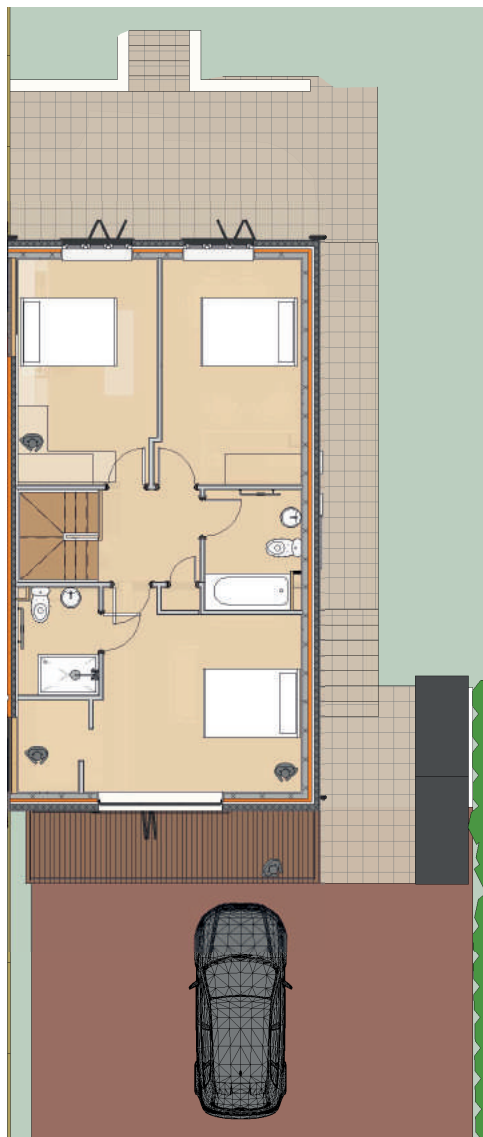
EASTHOLME

Westholme & Eastholme are two contemporary properties designed to fully capture the ever-changing views over the Severn Estuary and Wales.

Built by Bristol developer Landhaven Homes, these properties are both unique in style and contemporary. Landhaven's philosophy is to build homes as individual as the people who will own them, with care and consideration for style and specification in every detail.



GROUND FLOOR



FIRST FLOOR

These four bedroom homes will be launched in spring 2019 with completion towards the summer 2019. Goodman & Lilley are pleased to be able to offer you these properties for pre launch and would advise you call our New Homes team on **0117 213 0151** for further details.

Specification

- Contemporary kitchens with solid stone worktops
- Fully integrated Bosch Appliances
- Kardean or similar flooring on the ground floor along with Bathrooms
- Carpets to bedrooms and landing area
- Oak veneered doors
- Worcester boiler with ground floor under floor heating
- Burglar Alarms
- Brick paved driveways
- Landscaped gardens
- 10 year New Build warranty by LABC

INTERIOR DESIGN

Each unit designed by Juby Designs.

All viewings strictly by appointment
with the agent Goodman & Lilley

Phone 0117 213 0151 or
email LNH@goodmanlilley.co.uk

**GOODMAN
& LILLEY**

THE INDEPENDENT SALES, LETTINGS & LAND AGENTS

